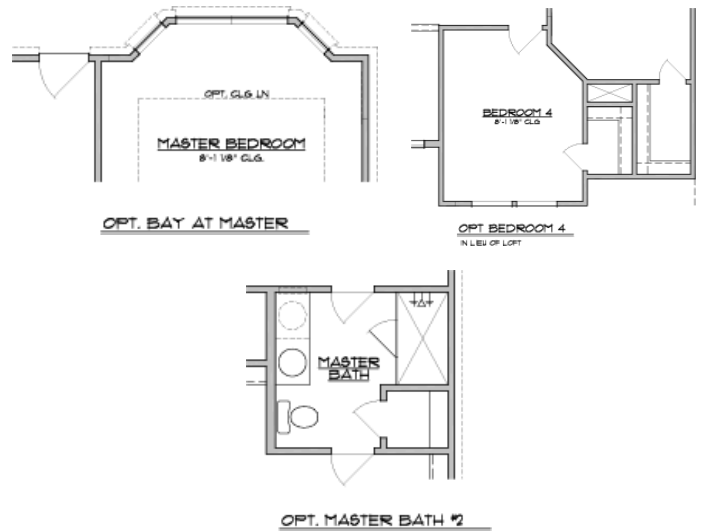
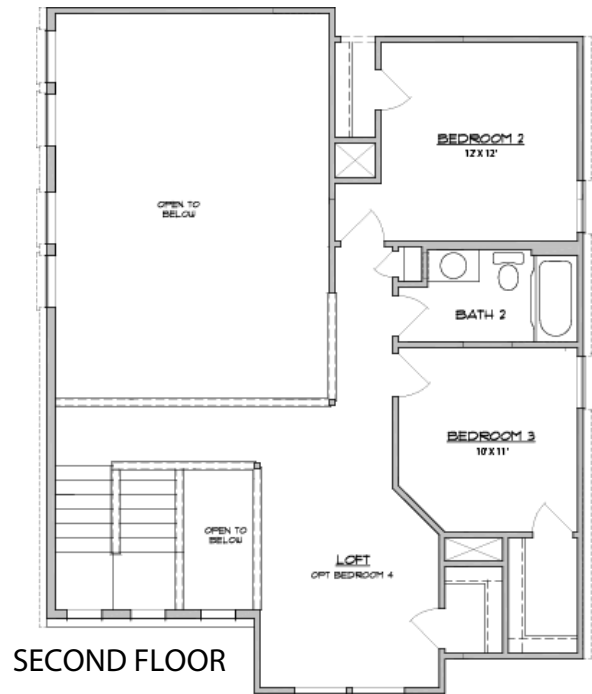
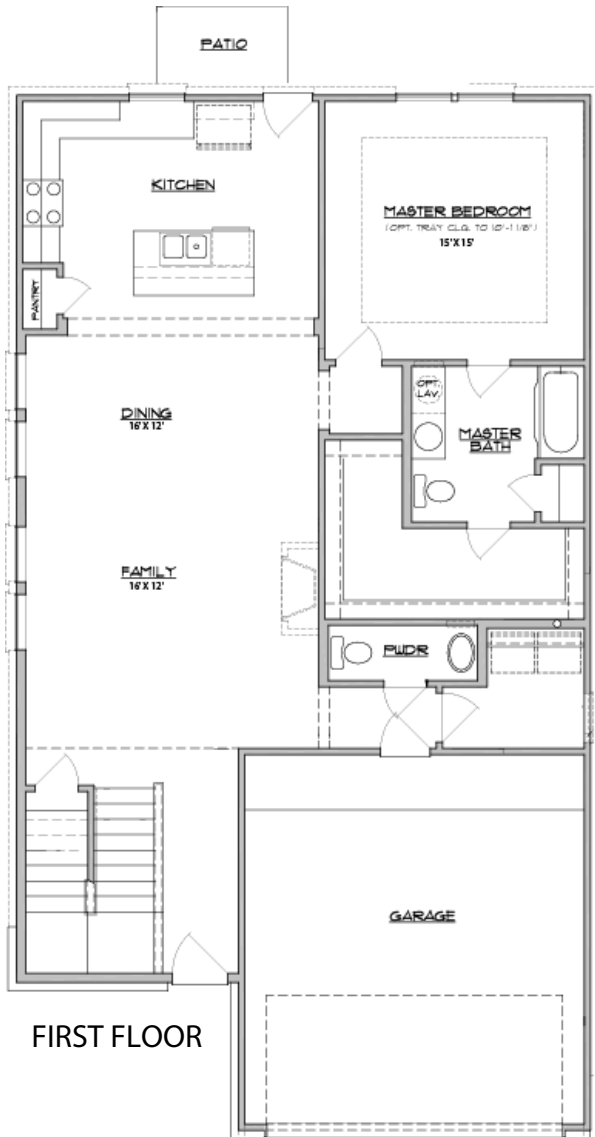


THE VICTORIA • 1,926 Sq. Ft.

- 4 Bedroom, 2.5 Baths
- Open Dining and Family Room
- Master Bedroom with Large Walk-In Closet
- Rear Patio



Approved by: 01/29/2024

All square footage is approximate. Anglia Homes reserves the right to change specifications and designs without notice.



THE VICTORIA • 1,926 Sq. Ft.



ELEVATION A



ELEVATION B

All elevations and floor plan renderings may vary due to community specific Deed Restrictions, Building Code Requirements or Subdivision Builder Requirements as listed on Design Feature Sheet.